



Chippendale Way, Uxbridge, Middlesex, UB8 1QJ

- EPC Rating - D
- Two off street parking spaces*
- Recently refurbished
- Town centre
- Available NOW
- Unfurnished
- Downstairs WC
- Fantastic location
- Low maintrance rear garden
- Gas central heating

£1,825 PCM

Cameron Estate Agents
195 High Street,
Middlesex, Uxbridge, UB8 1LB

E: uxbridge@cameron.co
T: 01895252000

www.cameron.co



Whilst every care has been taken to ensure the accuracy of these particulars, none of the statements contained herein are to be relied upon as representations of fact. These particulars do not constitute an offer or contract.

Description

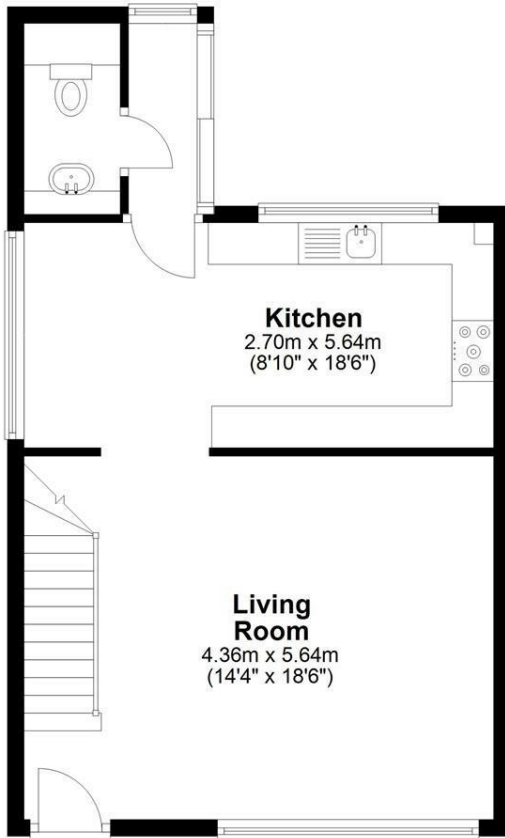
Available NOW - Having been subject to a recent refurbishment, Cameron are pleased to present this two double bedroom family home located within a stone throw away from the Town Centre. This stunning property offers a well presented kitchen with white goods and living room with wood laminate flooring, WC and side and direct access to a low maintrance and private rear garden. Upstairs offers a newly fitted bathroom, two double bedrooms which include built in wardrobe space and naturally coloured carpets. Off street parking, fantastic location for Uxbridge Town and all major road links, Hillingdon Hospital & Brunel University. Property must be seen to be appreciated. Available NOW and presented unfurnished. Suitable for a small family.

IMPORTANT NOTICE

These particulars have been prepared upon information supplied by the Vendor and should be verified by your surveyors and solicitors. In accordance with the Property Misdescriptions Act 1991 we have prepared these sales particulars as a general guide to give a broad description of the property. They are not intended to constitute part of an offer or contract. We have not carried out a structural survey and the services, appliances and specific fittings have not been tested. All photographs, measurements, floor plans and distances referred to are given as a guide only and should not be relied upon for the purchase of carpets or any other fixtures or fittings. Lease details service charge and ground rent (where applicable) are given as a guide only and should be checked and confirmed by your solicitor prior to exchange of contract

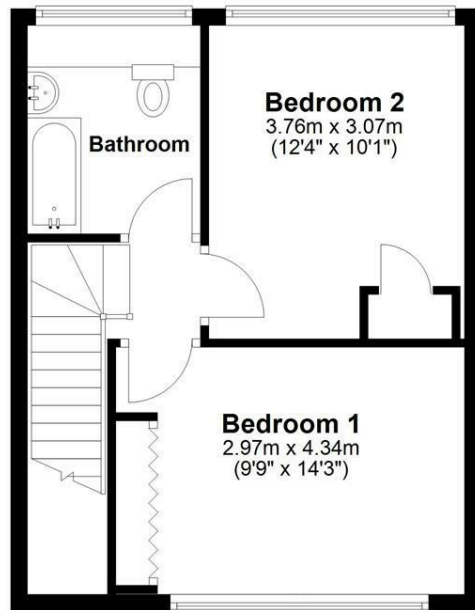
Ground Floor

Approx. 45.3 sq. metres (487.7 sq. feet)



First Floor

Approx. 36.3 sq. metres (390.4 sq. feet)



Total area: approx. 81.6 sq. metres (878.1 sq. feet)

Cameron



Whilst every care has been taken to ensure the accuracy of these particulars, none of the statements contained herein are to be relied upon as representations of fact. These particulars do not constitute an offer or contract.